

THIS INSTRUMENT PREPARED BY
 DAVID P. LINDLEY
 OF
CAULFIELD and WHEELER, INC.
 SURVEYORS - ENGINEERS - PLANNERS
 7301-A WEST PALMETTO PARK ROAD, SUITE 100A
 BOCA RATON, FLORIDA 33433 - (561)392-1991
 AUGUST - 2000

TOWNE PARK PLAT THREE

A PLANNED UNIT DEVELOPMENT BEING A PART OF TOWNE PARK PUD
 BEING A REPLAT OF A PORTION OF BLOCKS 36 AND 43,
 "PALM BEACH FARMS COMPANY PLAT NO. 3, AS RECORDED IN PLAT BOOK 2, PAGES 45 THROUGH 54 OF THE PUBLIC RECORDS OF PALM BEACH
 COUNTY, FLORIDA, LYING IN SECTIONS 6 AND 7, TOWNSHIP 45 SOUTH, RANGE 42 EAST, PALM BEACH COUNTY, FLORIDA

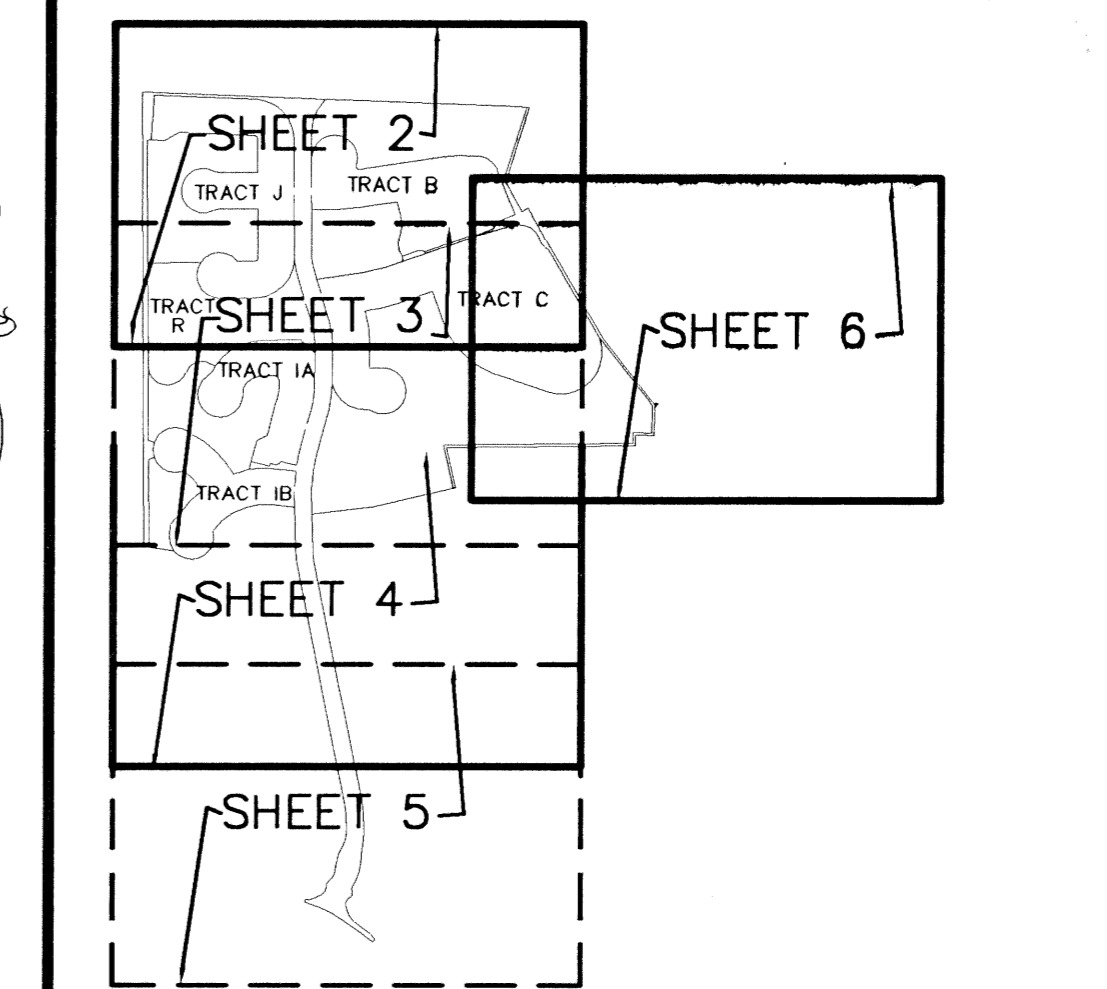
147

STATE OF FLORIDA
 COUNTY OF PALM BEACH
 THIS PLAT WAS FILED FOR
 RECORD AT _____ M.
 THIS _____ DAY OF _____
 A.D. 2001 AND DULY RECORDED
 IN PLAT BOOK _____ ON
 PAGES _____ AND _____

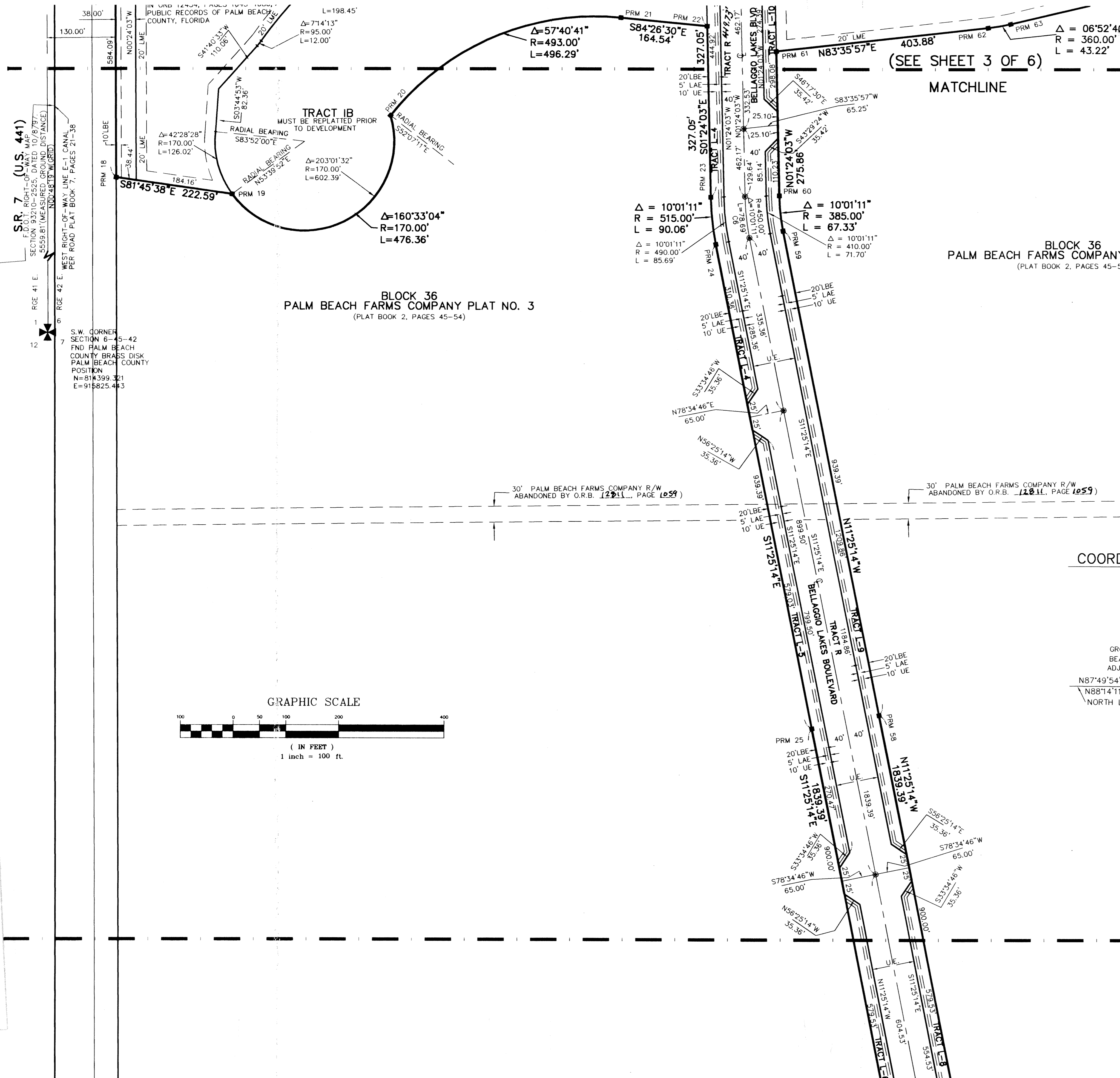
DOROTHY H. WILKEN
 CLERK CIRCUIT COURT

BY: _____
 DEPUTY CLERK

SHEET 4 OF 6



KEY MAP N.T.S.



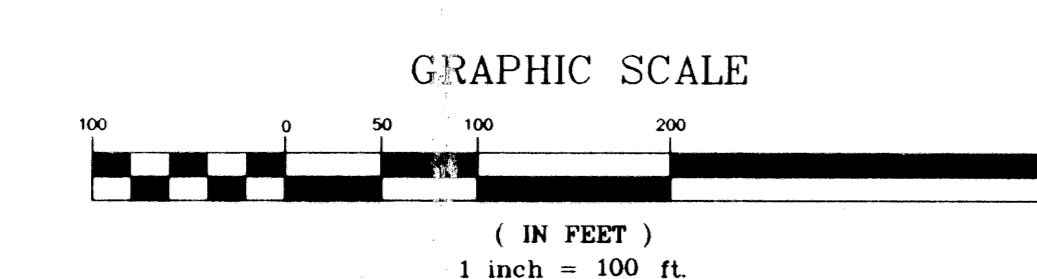
BLOCK 36
PALM BEACH FARMS COMPANY PLAT NO. 3
 (PLAT BOOK 2, PAGES 45-54)

BLOCK 36
PALM BEACH FARMS COMPANY PLAT NO. 3
 (PLAT BOOK 2, PAGES 45-54)

NOTES COORDINATES, BEARINGS AND DISTANCES

COORDINATES SHOWN ARE GRID
 DATUM = NAD 83 1990 ADJUSTMENT
 ZONE = FLORIDA EAST
 LINEAR UNIT = US SURVEY FEET
 COORDINATE SYSTEM 1983 STATE PLANE
 TRANSVERSE MERCATOR PROJECTION
 ALL DISTANCES ARE GROUND
 SCALE FACTOR = 1.0000195
 GROUND DISTANCE X SCALE FACTOR = GRID DISTANCE
 BEARINGS AS SHOWN HEREON ARE GRID DATUM, NAD 83 1990
 ADJUSTMENT, FLORIDA EAST ZONE.
 N87°49'54"W (PLAT BEARING) 00°24'17" = BEARING ROTATION
 N88°14'11"W (GRID BEARING) (PLAT TO GRID)
 NORTH LINE THIS PLAT COUNTERCLOCKWISE

CURVE NO.	CHORD BEARING	CHORD DISTANCE
C1	S19°00'17"W	265.80'
C2	S08°29'51"E	84.51'
C3	S07°54'40"E	120.77'
C4	S08°02'02"W	126.40'
C5	S09°36'44"W	79.32'
C6	S08°24'39"E	78.59'
C7	S06°31'14"E	76.87'
C8	S16°19'27"W	227.30'
C9	S57°41'21"E	231.40'



MATCHLINE
 (SEE SHEET 5 OF 6)

REVISION 1000
 9/1
 PAGE 147
 RELAY MAP B
 ZONING PUD
 PLAT # 44
 ZIP CODE 33407
 743
 TOWNE PARK PUD

LEXINGTON 1 OF SHERBROOKE
 (PLAT BOOK 32, PAGES 195-196)

N00°33'53"W 1280.00'